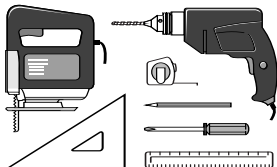




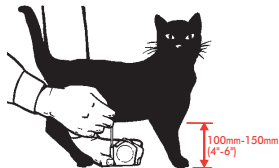
**BEFORE INSTALLATION YOUR CAT FLAP PLEASE READ THE FOLLOWING STEP-BY-STEP INSTRUCTIONS CAREFULLY**

**1.**



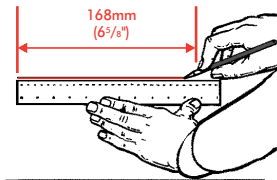
**TOOLS REQUIRED**

**2.**



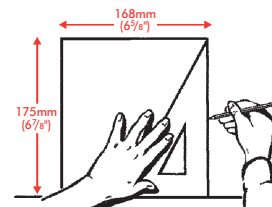
Measure the belly height of your cat. This is usually around 100-150mm (4"-6").

**3.**



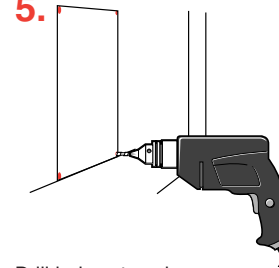
Mark this measurement on the outside of your door and draw a straight horizontal line 168mm (6<sup>7</sup>/<sub>8</sub>"

**4.**



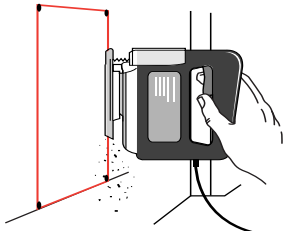
Using the horizontal line as the starting point, draw a square 168mm x 175mm (6<sup>7</sup>/<sub>8</sub>" x 6<sup>7</sup>/<sub>8</sub>"

**5.**



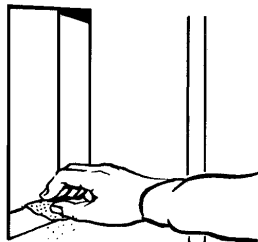
Drill holes at each corner.

**6.**



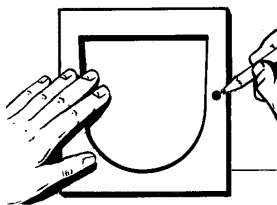
Cut along the lines using a jigsaw

**7.**



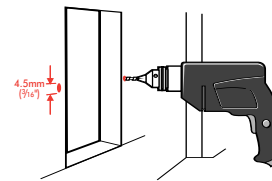
Smooth out the rough edges.

**8.**



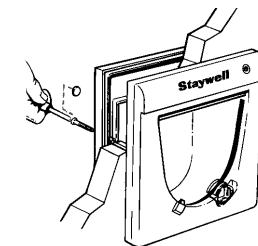
Remove the screw hole blanking plugs by pushing through from the reverse. Place the cat flap in the hole and mark the screw holes.

**9.**



Remove the cat flap and drill the holes with a 4.5mm (3/16") drill bit.

**10.**



Screw into place and, if needed, cut the screws down to size and file to ensure no sharp edges. Cover the screw holes with the blanking plugs supplied to ensure a neat finish.

Your Staywell cat flap is fitted with the red 4 way lock on the **inside** of your door.

## IMPORTANT NOTES

### GLASS FITTING: 917. 919. 932

Your cat flap can only be fitted into double glazing or toughened glass at the time the glass panel is manufactured. Cutting holes in other types of glass can be hazardous and should only be carried out by a glazier.

A circular hole with a diameter of 210mm (8<sup>1/4</sup>") is required when installing in glass (rather than the standard square hole described above).

### FITTING FLAP: 917. 919. 932

When fitting the flap, please note that the magnetic strips should **attract** and not **repel** the flap.

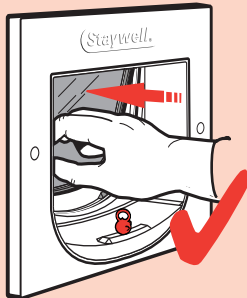
### TUNNEL 932 ONLY

The tunnel section of this product contains the latching mechanism. **DO NOT CUT THE TUNNEL.**

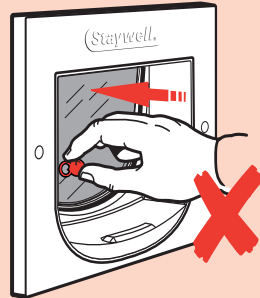
### METAL/GLASS DOORS: 932 ONLY

The 932 cat flap will not operate if fitted directly to a surface containing metal - e.g. uPVC coated metal doors, some plasterboards. If the door contains metal, the 932 cat flap must be isolated from the metal by using a wooden frame with an internal dimension of 169mm x 169mm (6<sup>5/8</sup>" x 6<sup>5/8</sup>") and an external dimension of 306mm x 306mm (12<sup>1/4</sup>" x 12<sup>1/4</sup>"). The cat flap will not operate in double glazing unless a plastic spacer bar is used.

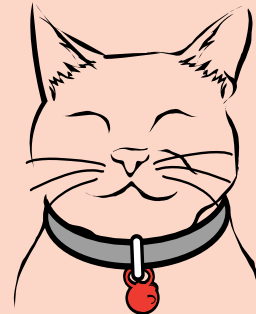
### TESTING YOUR MAGNETIC KEY: 932 ONLY



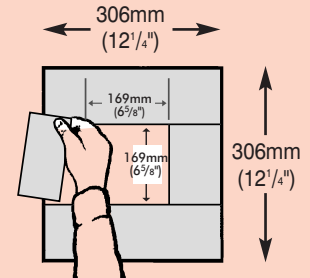
Place collar key on magnetic strip and push door to open.



Do not force flap open with magnet in hand.



Fit one key to your cat's collar.



The Staywell 932 cat flap is designed to help keep out strays. It is not possible to fully guarantee the exclusion of other animals in all circumstances. Neither the manufacturer or its agents will be liable for any damage, loss or inconvenience caused by unwanted animals who may enter your home.



**EU/UK**  
**Reilor Ltd**  
**Preston PR2 5AP, England**  
**Tel: +44(0)870 753 9898**

**USA**  
**Reilor Inc**  
**Runnemed NJ 08078, USA**  
**Tel: +1 856 939 5155**

**info@reilor.com    www.staywell.co.uk**